

DIGNO GO
GOURMET BIKE TOURS

PIEDMONT

LUXURY



Day 1

Today's Ride: 18 Miles (2,000' Elev. Gain)

Your bike trip in Piedmont starts in Turin. After meeting your trip leaders, you shuttle to Coazzolo, a commune in the Province of Asti. Enjoy a light lunch and a quick introduction to the week. Later, get fitted on your bike and travel through lovely rural villages and vineyards. Arrive at the Relais San Maurizio, an ancient XVII century monastery and your hotel for the next two nights. In the evening, dine at Guido da Castigliole, a fine dining restaurant for more than 5 decades. Expect to be wowed by the exquisite display of culinary expertise.

Day 2

Today's Ride: 27 Miles (3,000' Elev. Gain)

Short Option: 18 Miles (1,800')

Long Option: 34 Miles (3,900')

Begin the day with a luscious breakfast at the Relais San Maurizio. Head out through the beautiful landscape of hilltop villages and vineyards to Costigliole d'Asti. Take a break for lunch on your own before cycling back toward Santo Stefano Belbo and your hotel. Later in the afternoon, make sure to go relax at the Spa La Via del Sale. Swim in the salt cave or lounge in the midst of the vineyards. Before dinner, join us for a wine tasting at one of the leading wine estate in the area.

Day 3

Today's Ride: 31 Miles (3,700' Elev. Gain)

Short Option: 18 Miles (2,300')

Long Option: 36 Miles (4,900')

Your luxury bike tour continues through the impressive hillside of the Langhe. In the morning, take an easy ride through some spectacular rolling hills. Then, arrive in Barbaresco, a town as well as the name of a famous wine. Go for a visit of the town on your own and if time permits, stop at the enoteca comunale and taste some of the local wines. Leave Barbaresco and ride uphill to Benevello, your lunch break. In the afternoon, spin through the rolling hills to Villa Beccaris, a family run hotel and XVIII century villa with beautiful views on

the Barolo hills. For dinner, you're on your own in Monforte d'Alba, a historic hilltop town.

Day 4

Today's Ride: 29 Miles (2,900' Elev. Gain)

Short Option: 18 Miles (1,400')

Long Option: 37 Miles (4,300')

On your fourth day, set out on a loop ride to Barolo and through the surrounding vineyards. Leave Monforte d'Alba and ride by the Castello di Serralunga d'Alba, La Morra and Croera. Arrive in Barolo and join us for a wine tasting at the Marchesi di Barolo winery. Then, stroll the streets of the 10th century town before lunch on your own at a local trattoria. If time permits, go for a self-guided visit of the Castello Falletti di Barolo. Later, get back on your bike and head back to your hotel. On the way, challenge yourself on two steep climbs. Back at the hotel, you enjoy the rest of the day as you like.

Day 5

Today's Ride: 32 Miles (1,700' Elev. Gain)

Short Option: 18 Miles (1,000')

Long Option: 39 Miles (2,000')

Today, you cycle through the Province of Cuneo. Start with a downhill out of Montforte d'Alba before cycling through rolling hills on your way to Bene Vagienna for lunch. Challenge yourself on some significant climbs or jump in our minivan if you need a shuttle to the top of a hill. In the afternoon, arrive at the Palazzo Righini, a historical residence with frescoed ceilings and hand-baked bricks. Before dinner, join a local resident and his dog on a truffle hunting adventure. In the evening, gather with your newfound friends and celebrate the week with a dinner at the hotel gourmet restaurant.

Day 6

Your cycling trip in Piedmont ends at the Turin Porta Nuova train station.

Trip Accommodations

4 & 5 Star Hotels



Relais San Maurizio *** (2 Nights)**

Phone: +39 0141 841 900

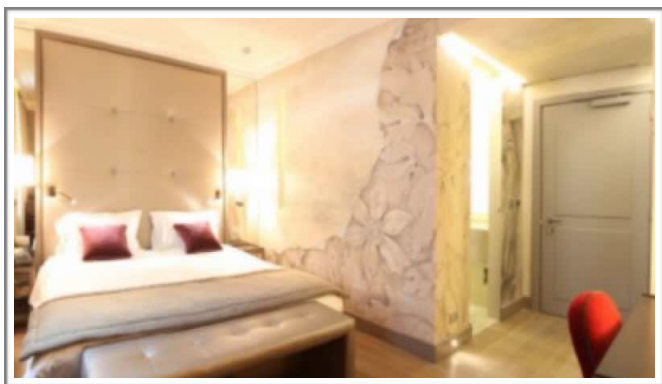
www.relaissanmaurizio.it



Villa Beccaris ** (2 Nights)**

Phone: +39 0173 78158

www.villabeccaris.it



Palazzo Righini ** (1 Night)**

Phone: +39 0172 666666

www.palazzorighini.it

Included/Not Included

Price Includes

- All breakfasts, 1 lunch and 4 dinners
- Multiple daily routes
- A fully equipped bicycle: the Fuji Absolute 1.1 Disc
- Handlebar bag, helmet and water bottle
- Garmin GPS with easy to follow directions
- 1 leader for every 5 guests
- Snack & drinks during the day
- Gratuities at hotels and restaurants
- Guided tours, tastings and entrance fees
- A leader offering minivan support
- Luggage transfers
- Porterage
- Minivan transfers during the trip
- Local guides and experts
- An email a few days prior to your trip

Price Excludes

- Transportation to & from pick-up/drop-off locations
- Pre or post trip lodging
- Minibar, massages, non scheduled activities, etc
- Alcoholic beverages
- Road bike or e-bike
- Gratuities for your Leaders

Meeting & Departing Information

Meeting Location

Meet your DIGnGO Trip Leaders, in front of the Turin Porta Nuova train station **ticketing office** at 10.30 AM. From here, shuttle 1h30 minutes to the start of our first bike ride. Be sure to wear your cycling outfit so you are ready to ride.

Arriving Late to the Meeting Location

If you have a delay on the first day of the trip, please email or call your trip leaders as their contact information will be emailed to you 48 hours prior to the trip start.

If you arrive late to the meeting location and do not see your trip leaders, you may take a taxi to the first night's hotel.

End of the Trip

The trip ends at the Turin Porta Nuova train station. DIGnGO Trip Leaders provide transportation, arriving at about 12.00 PM. Please make sure to book a train no earlier than 12.30 PM.

How to get to the Meeting Location

Trains run from Milan to Turin many times a day. You may buy your train ticket(s) at the train station, on your date of travel but we recommend that you buy it before. To make a reservation, EU citizen should go to www.voyages-sncf.com/en/. If you leave outside of the EU, go to www.raileurope.com. Please note that tickets become available 3 months in advance. Delays can occur if there are any timetable changes or the railway company has scheduled track maintenance.

How to Get to Downtown Milan From the Airport

The cost of a taxi to get to downtown Milan is around \$95 (USD). For taxi service we recommend that you either book a taxi before your arrival online with this company www.taximilanairport.com or that you take a taxi at your arrival.

Travel Essentials

How to Pack

Due to the limited space in our minivan, we ask you to limit the number of bags you bring to 1 suitcase and 1 carry-on luggage. In order to deliver your bags to your room, we ask that each bag has a clear luggage identification tag.

What to Wear for Dinner

Please remember that whether you dine at a Michelin-starred restaurant or at a local bistro you should feel comfortable. Men should wear dress pants with a shirt or a polo. Jackets are not required. Women should wear a dress, skirt, dress pants with a nice top. Sneakers, shorts and jeans are not recommended for dinners.

What to Wear while on the Bike

In order to feel comfortable, we recommend that you buy a pair of padded cycling shorts. There are many brands out there but a good quality one is best if you don't want to feel sore after a day of biking. We also recommend wearing a cycling jersey. In case of bad weather, a windbreaker and a rain jacket will keep you warm and dry.

Meals

Dinners are a combination of amazing local restaurants and gourmet meals. The first lunch is included. 4 lunches and 1 dinner are not included, for you to try local cuisine on your own. Alcoholic beverages are at your own expense.

Spa Treatments

Please note that spa treatments are not included in the trip price. If you wish to make an appointment, we recommend that you call your hotel and make a reservation ahead of time. However, make sure to book an appointment after 5.00 PM.

Tips & Gratuities

Please note that your trip leaders also rely on tips. Gratuities may be given at your discretion at the end of the trip according to the trip leaders professionalism. Industry standard is 5-10% of the trip price per team of leaders.

Destination Facts

Climate

It experiences a continental climate tempered by the Tanaro river.

To convert from Fahrenheit to Celsius in your head you can subtract 30 from the Fahrenheit figure and halve the result.

Average	Jan	Feb	Mar	Apr	May	Jun
High F	42	45	53	57	66	73
Low F	34	36	41	45	53	59
Prec. (In)	1	0.9	1.4	3.8	4.2	3.5
Average	Jul	Aug	Sep	Oct	Nov	Dec
High F	77	76	68	58	48	42
Low F	63	63	57	50	40	34
Prec. (In)	2.4	3.2	2.8	3.1	2.3	1.1

How to Dial Internationally

All phone numbers provided by DIGnGO are listed using the following format:

+ Country Code (0)# ## ## ## ##

Wherever you are calling from, make sure to dial + or 00 - *country code of country to which you are calling (ex. 33 for France) - local number.* If you see a (0), you must drop this digit when dialling the number.

Electric Current

Please note that in Europe electricity runs on a 220-volt. Most higher-end electronics have built-in voltage adapters so the voltage difference doesn't matter, however, you will still need a plug adapter. Before traveling to Europe, check the voltage of the electronics you will bring along with you. Your electronics will display the voltage in which your device operates. It will be printed near the plug or on the power brick.

Documents, Cancellation & More

Travel Documentations/Visa

All guests must have passports valid for six months following the departure date. Even though a visa is usually not required if you are staying less than 90 days in the country, you are advised to check with the consulates of the countries you will visit to determine which documents you must obtain.

Travel Insurance

Contact our office to receive a copy of the All-Inclusive plan full description of coverage.

Cancellations & Refunds

In case of cancellation, the cancellation fees are as follows:

- 91+ days before departure: Non refundable amounts
- 90 to 61 days before departure: 30% of the trip price
- 60 to 31 days before departure: 50% of the trip price
- 30 to 0 days before departure: 100% of the trip price

In case of cancellation, please note that exceptions to this policy cannot be made for any reason.

On the rare occasions when DIGnGO must cancel a trip, all payments received to date will be refunded, which constitutes full settlement. DIGnGO is not responsible for any personal expenses incurred in preparation for any cancelled trips.

Transfers

You may transfer from one trip to another up to 91 days before the departure of the trip, after that our cancellation policy applies.

Itinerary Changes

In some rare unforeseen circumstances some activities, restaurants, hotels, etc... might change. In case of hotel, we will make sure you get to stay in a hotel of the same standards.

Valuables

Valuables are 100% your responsibility. During the trip, do not leave any valuables in DIGnGO vans as we do not assume responsibility for any damage, loss or if they are stolen.

Frequently Asked Questions

Can you pick me up at a different location?

No, everyone is coming from a different location so your trip leaders will meet all of you at the starting location.

At the end of the trip, can you drop me off at a different location?

No, your leaders can't go to different locations, that is the reason why there is a drop off location for everyone.

I have to take a train at 7.30 AM & drop off time is 12.00 PM, can the trip leaders take me early?

Unfortunately we cannot accommodate multiple shuttles. If you need to go earlier, contact the front desk of your hotel as they will be glad to book a taxi for you.

Do you recommend bike shoes for riding?

It takes time to get used to riding with bike shoes and unless you are used to riding with bike shoes, sneakers are fine. However, if you decided to bring your bike shoes, you also need to bring your own pedals.

Should I bring a helmet?

Helmets are included but if you would rather bring your own, you're welcome to do so.

Can I adjust my bicycle stem?

Our touring bikes come with an adjustable stem allowing you to raise the handlebar so you have a more upright riding position.

What do you mean by multiple daily routes?

Each day we offer a range of mileage options and you decide how much activity you want to do.

Do you include alcoholic beverages?

DIGNGO includes alcohol during some activities. However, during lunch and dinner, it is not included and it is your responsibility to pay the bill.

How does it work for extras at the hotel?

Extras are your responsibility and the bill needs to be settled before you leave the hotel.

Should I bring my luggage down or leave it in the room when we change hotel?

Please bring it down to the lobby or have the staff of the hotel bring it down for you. Your trip leaders will then take care of the bags.

Should I carry my helmet, seatpost bag and water bottle in the room at night?

Please do, those are yours for the entire week and in order not to mix them with everyone else, we ask to bring all the materiel with you in the room. The only thing that you need to give your trip leaders is the Garmin GPS as they need to charge it for the next day.

Is there a minivan along the route during the day?

Yes, do not hesitate to ask for a ride if you need one.

Can I ride at my own speed?

Each bike has a Garmin GPS with pre-loaded routes allowing you to find your way.

Do we start cycling early?

Most days, you start cycling between 8.30 & 9.00 AM

How to ride pain-free?

A pair of padded cycling shorts is definitely a great investment.



Cycling Safety

The Rules

- Wearing a helmet on a DIGnGO trip is required.
- While you're riding your bike, ensure that you are using good judgment and being aware of your surroundings. The unexpected can happen in an instant and maintaining alertness will ensure that you, and those around you, are safe.
- Do not wear headphones while riding as they will likely drown out important sounds and distract your attention.
- Avoid riding side by side but instead try to "ride single file". Leave enough space between yourself and the rider in front of you for a car to fit.
- If you are traveling downhill, increase the distance between yourself and others to ensure your ability to stop, should someone ahead of you brake suddenly.
- Be courteous to other riders and motorists, especially near intersections, driveways, parked cars, and other places as they may not be aware of you.
- In some countries, you will find intersections with no traffic signals. In that case, please note that other vehicles have the right away.
- Stop at all red lights and stop signs.
- Make sure to yield to pedestrians.
- As you are about to turn, communicate your intention to others around you by using recognised hand signals.
- Avoid road obstacles such as potholes, rocks, etc. While going over rough terrain, such as gravel, sand, or rocks, make sure to downshift.
- While riding downhill make sure that you are using both brakes in order to control your speed and avoid "glazing over".

Pre & Post Trip Lodging Options

Room Rate Guide

(Per Night)

0 to 100€.....	€
101€ to 200€.....	€€
201€ to 300€.....	€€€
301€ to 400€.....	€€€€
401€ to 900€.....	€€€€€

Turin

Hotel Principi di Piemonte

www.atahotels.it | Rates: €€

Allegroitalia Golden Palace

www.goldenpalacetorino.com | Rates: €€

Turin Palace Hotel

www.turinpalacehotel.com | Rates: €€

Grand Hotel Sitea

www.grandhotelsitea.it | Rates: €€

NH Collection Torino Piazza Carlina

www.nh-collection.com | Rates: €€

Hotel Victoria

www.hotelvictoria-torino.com | Rates: €€€

TownHouse 70

www.70.townhousehotels.com | Rates: €€

Residence Sacchi

www.residencesacchi.it | Rates: €

NH Torino Santo Stefano

www.nh-hotels.com | Rates: €€

Best Western Plus

www.bestwestern.com | Rates: €

NH Torino Lingotto Congress

www.nh-hotels.com | Rates: €€

AC Hotel Torino

www.marriott.com | Rates: €€

DIGnGO's Packing List

Travel Documents

- This document
- Passport
- Visa
- Air transportation confirmation details
- Rail transportation confirmation details
- Pre/post trip lodging confirmation details
- Cash (€)
- Credit Cards

Electronics

- Plug adapter
- Cell Phone & charger
- Camera & charger

Cycling Clothing

- Padded cycling shorts
- Cycling jersey
- Cycling Jacket
- Bike shoes & pedals
- Sneakers
- Cycling gloves
- Rain jacket
- Cycling pants
- Arm warmers

- Leg warmers
- Shoe covers & booties
- Cycling headband or cap

Personal Items

- Medication
- Eyeglasses, contacts, contact lens solution
- Sunscreen
- Swimsuit
- Travel journal/notepad and/or reading material
- Bike Helmet